

Passenger Rail and a Sense of Place

John Robert Smith

April 16, 2024



Transportation
for America



Smart Growth America
Improving lives by improving communities



National Complete
Streets Coalition



State
Smart Transportation
Initiative
Practical Solutions to Move America Forward

LOCUS



GOVERNORS'
INSTITUTE
on community design

FBCI Form-Based
Codes Institute

“We envision a country where no matter where you live, or who you are, you can enjoy living in a place that is healthy, prosperous, and resilient.”

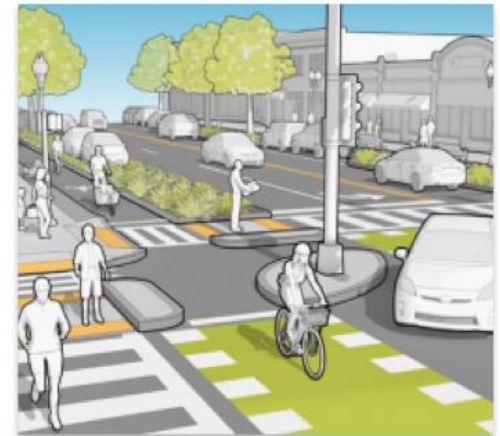
What we do



Technical Assistance



Advocacy



Thought Leadership

*Who are we
designing for?*





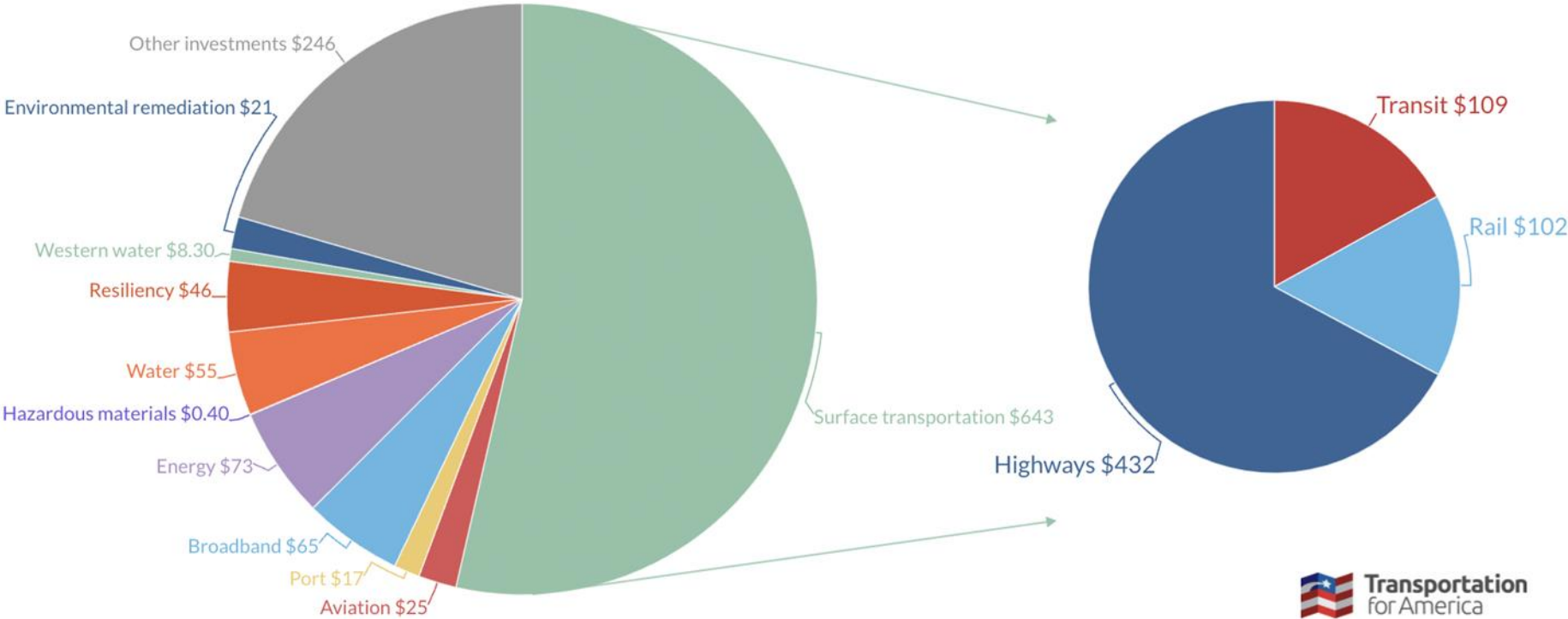
Vehicles, or People?

The image shows the United States Capitol building in Washington, D.C., viewed through the branches of trees with autumn-colored leaves. The building's iconic dome is the central focus, topped with the Statue of Freedom. The sky is overcast and grey. Two blue rectangular boxes with white text are overlaid on the right side of the image.

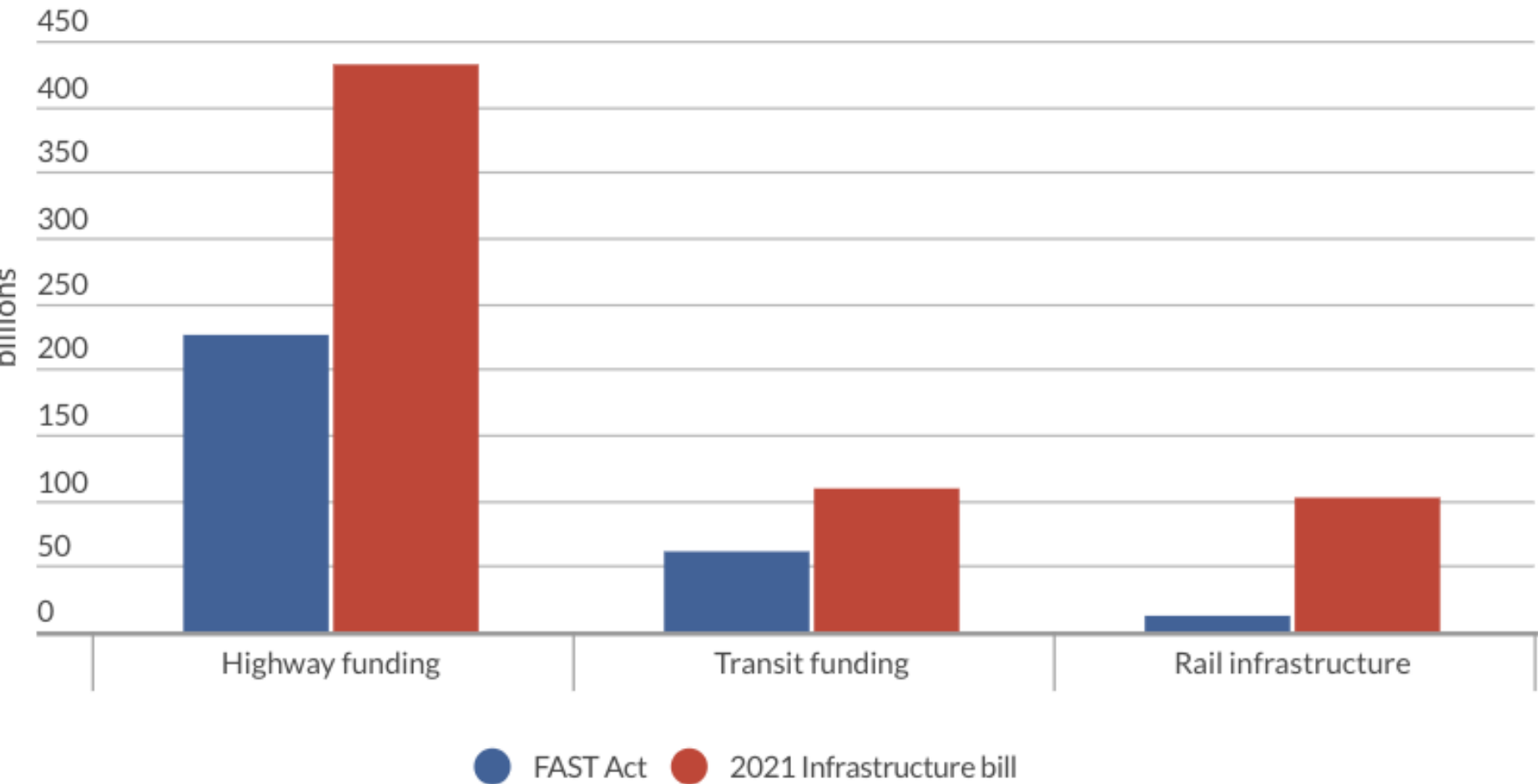
The Infrastructure Investment and Jobs Act of 2021

<https://t4america.org/iija/>

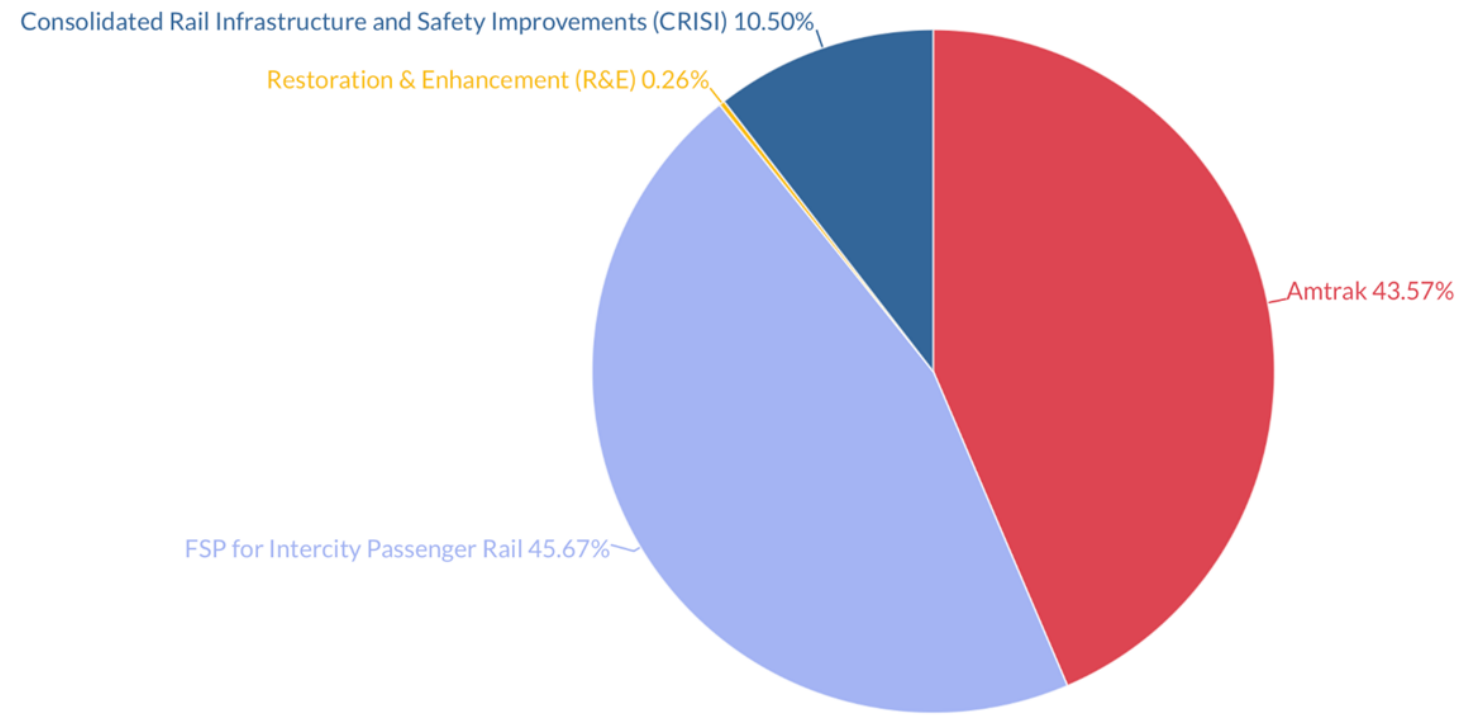
Where is the infrastructure bill money going? (in billions)



FAST Act vs the 2021 infrastructure bill



Passenger rail programs in the 2021 infrastructure bill (by percentage)



Communities are now in a ferocious competition over place

*(whether they know it
or not)*



Federal funding opportunities for creating a sense of place:

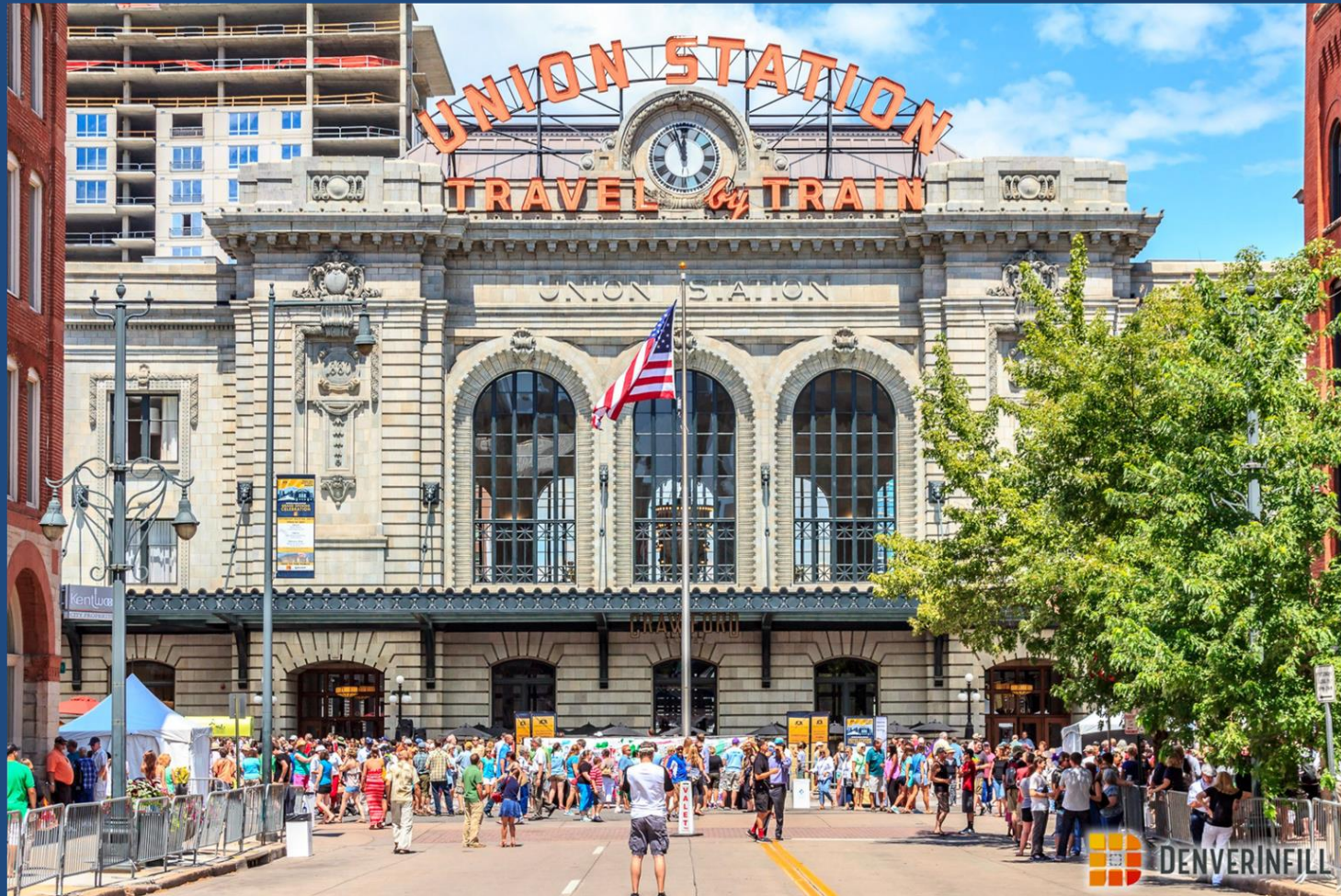
1. Complete Streets Set-Aside
2. Transportation Alternatives Program
3. PROTECT program
4. RAISE program
5. Safe Streets and Roads for All
6. Reconnecting Communities Program



Sense of Place: Kirkwood, MO



Sense of Place: Denver, CO



Sense of Place: Normal, IL





SOUTHERN RAIL COMMISSION: PLAN FOR CONNECTIVITY

SOUTHERN RAIL
COMMISSION



Transportation
for America

Restoration of Gulf Coast Passenger Rail Service

Economic Impact in Mississippi, Alabama and Louisiana

Prepared By:

Dr. Yuanyuan Zhang, Research Professor

MAY 2018

REVISION 2



Railway Construction Costs

Table 14: Railway Construction and Renovation Economic Impact in Mississippi

Activities	Employment	Labor Income	Value Added	Output (Direct, Indirect, and Induced)
Railway construction	261	\$10,966,473	\$15,927,146	\$32,471,763
Railway station renovation	16	\$631,314	\$932,019	\$2,040,135
Total (over four years)	277	\$11,597,787	\$16,859,165	\$34,511,898
Average per year	70	\$2,899,447	\$4,214,791	\$8,627,975

Source: IMPLAN Input/Output Analysis

Tourism Impact

Table 15: Increased Tourism Economic Contribution in Mississippi

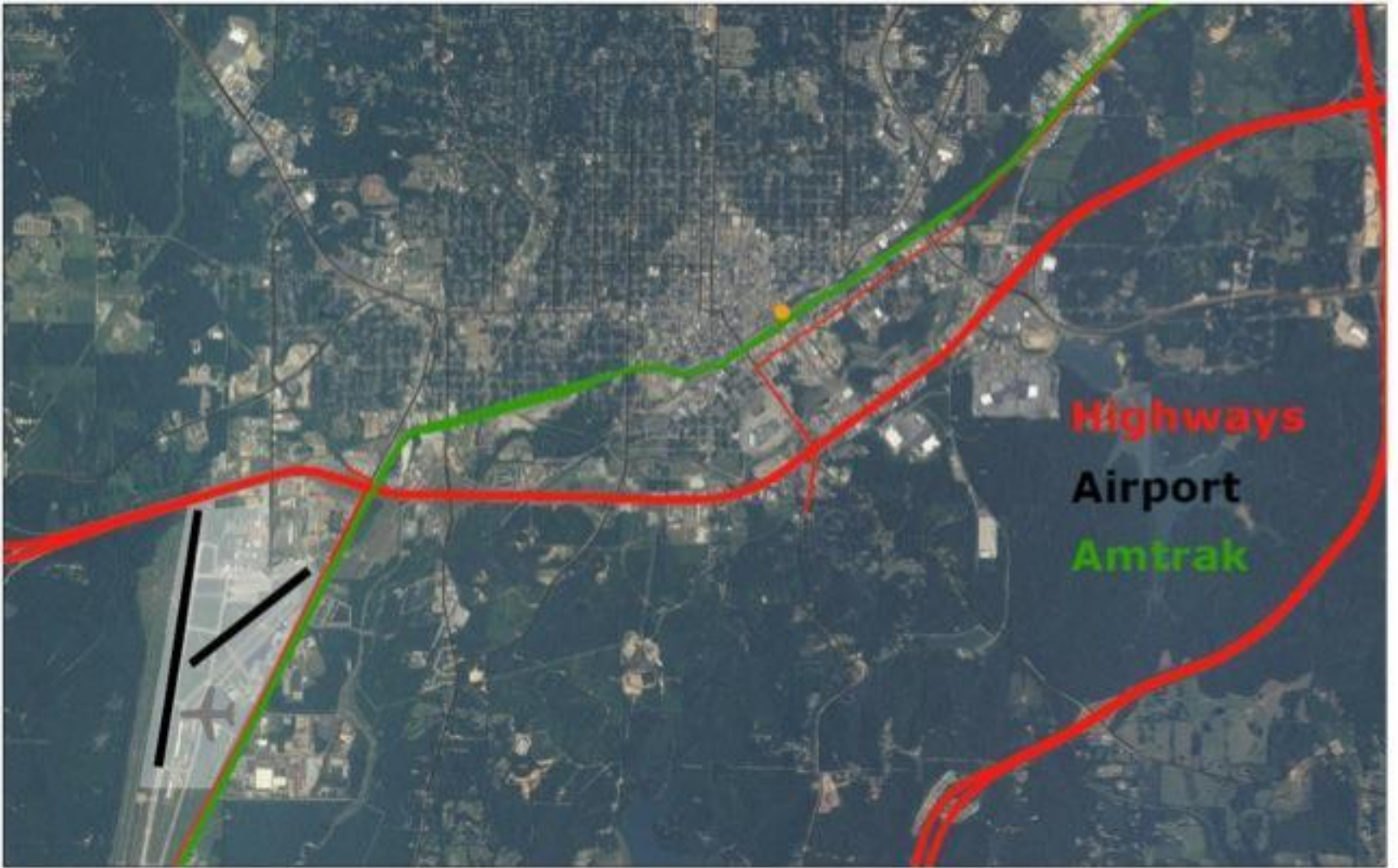
Increased Tourism Scenarios	New Annual Employment	Labor Income	Value Added	Output (Direct, Indirect, and Induced)
1%	394	\$8,945,093	\$12,711,757	\$24,296,224
5%	1,969	\$44,725,466	\$63,558,787	\$121,481,120
10%	3,938	\$89,450,932	\$127,117,573	\$242,962,239
20%	7,876	\$178,901,864	\$254,235,146	\$485,924,479

Source: IMPLAN Input/Output Analysis

Meridian, MS



Transportation
for America



Highways
Airport
Amtrak



Transportation
for America

Your Identity is Key

In any public project you need to know:

- Who you were in the past
- Who you are now
- And who you aspire to be



Who You Were in the Past



Transportation
for America



Transportation
for America

Marks Rothenberg Company, Meridian, Miss.



Transportation
for America



Transportation
for America

Meridian's Union Station



Transportation
for America

Who You Are Now



Transportation
for America



Transportation
for America

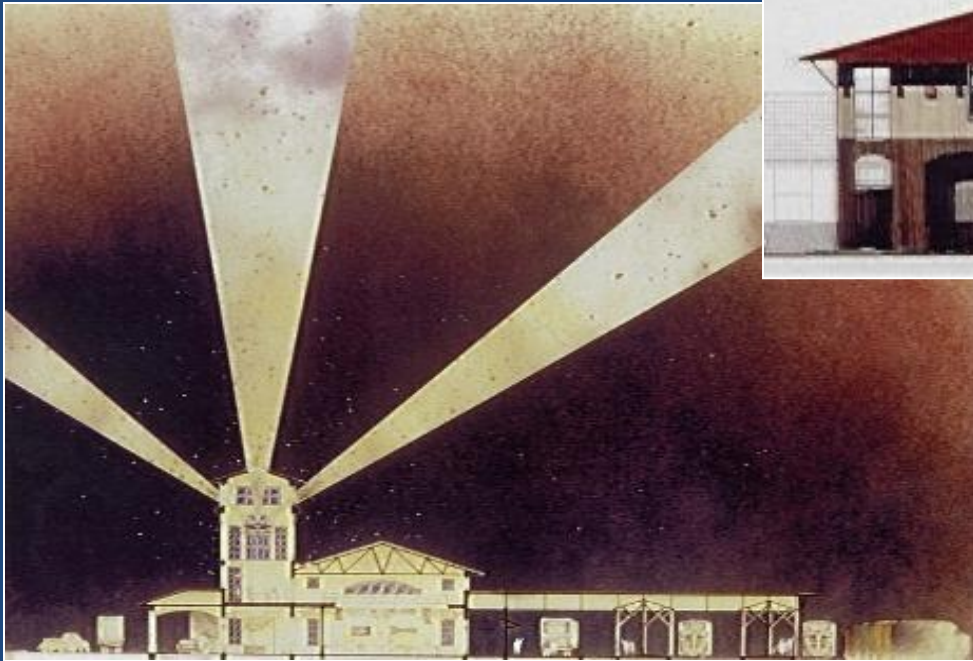


Transportation
for America



Transportation
for America

Who You Aspire to Be



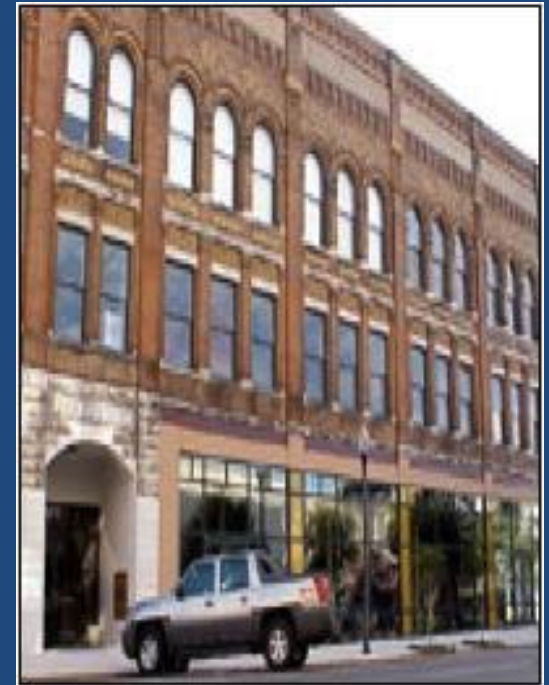
Transportation
for America



Union Station Development Results



- Private development of \$197 million in surrounding area
- New life for historic structures





Transportation
for America



Transportation
for America

World Class Performances



50th Anniversary with Itzhak Perlman

Wynton Marsalis

Mississippi Arts and Entertainment Center



Transportation
for America



Transportation
for America



Transportation
for America



Transportation
for America

Now is the time for action

Need everything in place to take advantage of infrastructure law funding:

- 1) Clear, shared vision of your community's future – compelling narrative
- 2) Stakeholder alignment around first steps
- 3) Identified federal and state programs
- 4) Matching funds

[Link to DOT discretionary grant schedule>>](#)



Transportation
for America

It Is Critical to Engage Future Generations



Transportation
for America